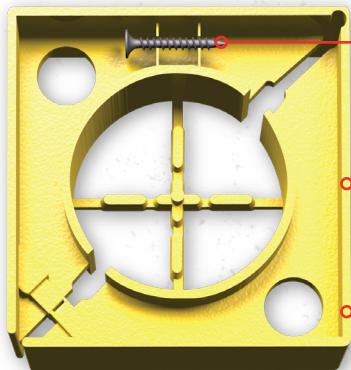


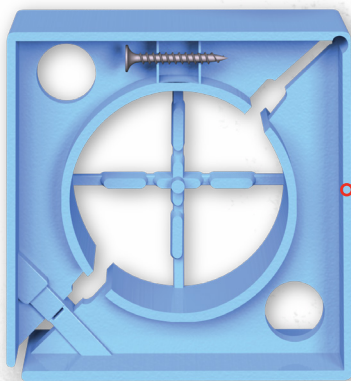
E-Z COLUMN FRAMING COLLAR



**ATTACHMENT SCREW
INCLUDED**

**USE YELLOW E-Z COLUMN
FOR 3- TO 3-1/2-INCH LALLY COLUMNS**

PATENTED DESIGN



**USE BLUE E-Z COLUMN
FOR 4-INCH LALLY COLUMNS**



**E-Z COLUMN HINGES
OPEN FOR EASY INSTALLATION**

U.S. PATENT 5,553,433



Grabber's patented E-Z Column framing collars are the best and easiest way to frame around Lally columns. Found in many basements, these round columns can require a lot of time and skill to frame around. E-Z Column turns a difficult and frustrating job into a quick and easy task.

PROFESSIONAL-GRADE E-Z COLUMN ADVANTAGES

EVERYTHING INCLUDED.

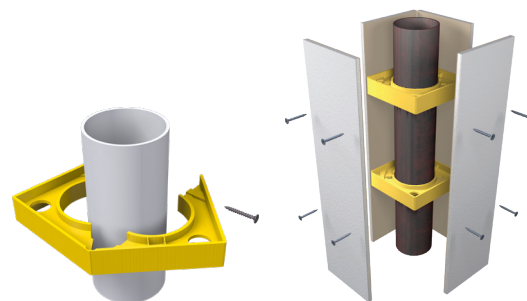
Each package contains 5 framing collars with attachment screws, everything you need to frame one Lally column.

WORKS FOR MOST COMMON COLUMN DIAMETERS.

Yellow collars work for 3- to 3-1/2-inch diameter columns. Blue collars will frame around 4-inch diameter columns.

EASY INSTALLATION.

Hinge design allows the collar to open and easily fit around the Lally column. Secure the included screw to tighten the fit.



› Quickly frame round support columns for finishing with drywall, paneling or other material.

› Combine with round plastic corner bead and drywall for the most professional looking finished column for any home or office.

FRAMING SUPPORT COLUMNS IS E-Z



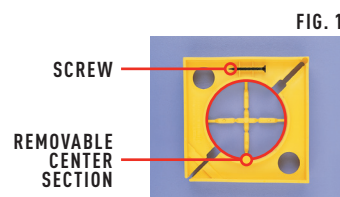
ONE-PIECE CONSTRUCTION FOR FAST, EASY INSTALLATION WHEN FRAMING ROUND COLUMNS.
COLLARS FIT STANDARD 3, 3-1/2, AND 4-IN STEEL COLUMNS.

IT'S THIS E-Z:

Nº 1

MEASURE YOUR SUPPORT COLUMN

If it's 3 inches or 3-1/2 inches, use yellow E-Z Columns. If it's 4 inches, use blue E-Z Columns.
Cut the center section to separate the spacer tabs, then fold them back.



Nº 2

INSTALL E-Z COLUMN

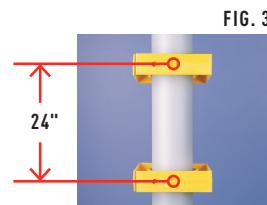
Open E-Z Column collars. Place them around the column, starting with one at the top and one at the bottom.
Add additional E-Z Column collars as needed, spacing each 24 inches on center from the previous. Five E-Z Column collars are recommended for each 8-foot column.



Nº 3

SECURE E-Z COLUMN

Remove screw from the clip. Insert screw and slightly tighten. Make sure each E-Z Column collar is level and that the E-Z Column corners are squared and lined up with each other.



Nº 4

FINAL ADJUSTMENT

Tighten and adjust the screw on each E-Z Column to ensure square corners. Do not over-tighten. You are now ready to attach drywall, paneling, corner bead etc. E-Z Column will accept standard Grabber drywall screws as well as finishing nails.

